

holzer

for office, home and restaurant



LÖFFLER
die bewegen

Geniale Ideen brauchen einen guten Platz, um groß zu werden.

Ingenious ideas need a suitable environment to grow in.

“Tangible responsibility” taken literally – the new product range from LÖFFLER speaks ecological truth. Central European origins and the potential inherent in enjoyment, inspiration and creativity find their expression in new design and imaginative diversity.

New ground is being broken: by the products, by the company's architecture, by the LÖFFLER collection and by its attitude towards designers and users. LÖFFLER is best in its niche. LÖFFLER presents holzer.

The team and designers of „Holzwerkstätten in Südkärnten“ in 1983, Max Bill, Johannes Spalt, Luigi Blau, Anna Lülja Praun





Werner Löffler

Born in 1962, seating furniture traditionalist, globally active in the office seating furniture sector for 10 years, founded "Löffler" in 1992 in order to bring creative movement into sitting. He revolutionised the market with ERGO TOP® technology, launched in cooperation with the ergonomics department of Technical University of Munich. His lectures concerning lordosis and kyphosis are legendary: the ergonomic solution for healthy sitting developed by Löffler combines optimised posture, muscle work and spinal disc care. Bringing creative movement to sitting has found an enthusiastic promoter: Werner Löffler.

Fritz Močnik

Born in 1950, joined Löffler in 2008 by designed provenance: Močnik, who studied furniture making and interior design at the School of Applied Arts in Vienna, founded the "Holzwerkstätten in Südkärnten" association in 1978 and developed "new furniture" under Max Bill, Johannes Spalt, Luigi Blau and Anna Praun that found its "place" on the European art market at the 1980 exhibition, expressively narrated by Gert Jonke. As product developer in Waidhofen an der Ybbs, he studied environmental management in Krems and developed the "KOIIOKO" furniture label.



Its colour and grain make walnut ideal for high-quality, tasteful holzer models



Walnut stands for continuity and strength and is one of the most valuable native woods

holzer = timeless value over generations

holzer is the expression of our responsibility towards nature and native arts and crafts combined with new, unusual design. holzer is made in Germany from native woods. The process involves 25 individual technically sophisticated operations plus fine finishing by hand. The seat shell is shaped from six layers of beech veneer and can be separately upholstered. The armrest combined with the leg structure is the epitome of tangible and visible perfection in design.



HZ 1001 Chair
5 mm upholstered, walnut, leather upholstery

HZ 1007 Nest of Tables II



holzer table design captivates the eye with its reduced form whilst providing sufficient space for basics

HZ 1001 Chair
5 mm upholstered,
black beech,
upholstery C763 slate

HZ 1004 Table
folding, natural beech

HZ 1001 Chair
5 mm upholstered,
black beech,
upholstery C763 slate



HZ 1004 Table folding, natural beech

HZ 1001 Chair

5 mm upholstered, natural beech, upholstery C280 Cottbus

Working with holzer = the detour to every pleasure

holzer in the working environment ensures long-term success. Perfect design guarantees comfort, stability and dynamics, leaving enough scope for idiosyncratic design preferences. The understated, elegant presentation enhances the effect of professional skill in combination with creative options.



holzer = an expression of clarity in material and design

holzer tables and chairs capture ideas in a nutshell



HZ 1005 Table
folding, black beech

HZ 1001 Chair
5 mm upholstered,
black beech,
upholstery C763 slate

holzer = diversity²

Empathy with nature, brought to fruition in holzer – the holzer mood and design palette ranges from warm and snug to matter of fact and clear, making the hearts of architects and interior designers beat that extra beat. The motto: "Just as you like it".



HZ 1000 Chair not upholstered, bordeaux beech

HZ 1000 Chair not upholstered, honey beech

HZ 1000 Chair not upholstered, natural beech

HZ 1000 Chair not upholstered, black beech

HZ 1001 Chair 5 mm upholstered, walnut, upholstery: brown leather





Bon appétit: dinner accompanied by distinct forms with stainless steel fittings



Dinner is served: on solid wooden boards made of beech or walnut – always matching the seating

In holzer company = classic feel-good ambience

Whenever you and your guests want to feel at home then holzer, the congenial host, takes on the challenge: comfortable seating and a plethora of colour creations conjure up ingenious impressions and emphasize highly personal taste.



HZ 1004 Table
folding, natural beech

HZ 1002 Chair
30 mm upholstered, natural beech, upholstery C761 acorn

FU 9000 FUNGO Stool



HZ 1000 Chair
not upholstered, black beech



holzer coat stand for individualists – unites purpose and design either alone or in liaison with the nest of tables and chairs.

HZ 1010 Coat Stand
black beech

HZ 1009 Nest of Tables
Consisting of
HZ 1006, HZ 1007 and HZ 1008

HZ 1000 Chair
not upholstered, black beech

holzer = why not treat yourself

A piece of furniture for design individualists: holzer is diverse in colour and mix and match options, always remaining timeless and classic with inherent elegance.



HZ 1006 Nest of tables | small

Nest of tables as factotum for pleasurable hours



Club chair – extravagance for connoisseurs



Touches all the senses:
holzer hands-on



HZ 1003 Club Chair

30 mm upholstered, bordeaux beech,
upholstery: bordeaux leather

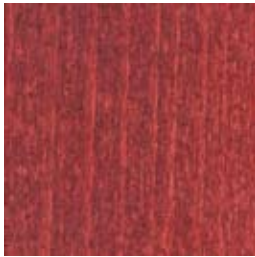
holzer = leisure for “GRASPING THE ESSENTIAL”

The art of leisure begins with holzer: an ability to change is the essence of holzer. holzer combines luxurious wood with leather-covered side elements and seating shells to create chairs for enjoying and philosophising – good thought is a product of good sitting.

holzer product information

holzer is a registered trademark of Löffler Bürositzmöbel GmbH

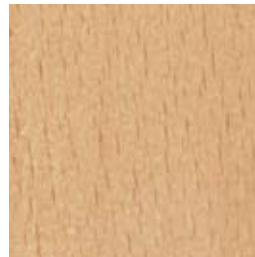
We provide all holzer products in the following wood stain shades



bordeaux Code B



black Code S



natural beech Code L



walnut Code N



honey Code H

All our chairs and tables are exclusively made of European beech / European walnut, in solid wood design. Beech products are stained and varnished; walnut products are varnished.

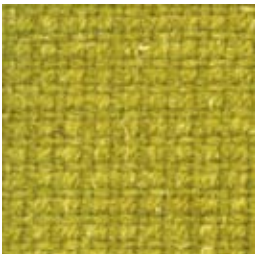
The coat stand has a 6 mm thick, solid circular base made of stainless steel with a polished surface.

Nests of tables have a stainless steel frame with a polished metal surface. Pipe diameter 25 mm (ring), 20 mm (support). Table tops are approx. 6 mm thick. The compact board is covered in a real wood veneer (beech) and is stained black and varnished to match all other products in the range.

For the upholstery you can choose from all the interior colour card products. Our new, environmentally friendly fabric for home and business interiors is also available. This is made of renewable materials and can be composted.

Nettle stalks contain the raw material – the fibre – which, when mixed with pure new wool, produces an entirely natural and sustainable fabric. The fabric texture reflects the natural charm of the materials used.

The simple panama weave and natural colour palette create a highly tasteful fabric for home and business interiors



Acorn C 761



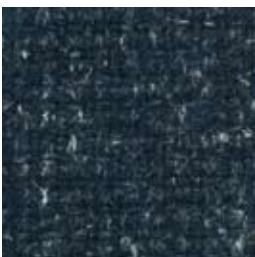
Autumn C 762



Dandelion C 760



Elderberry C 764



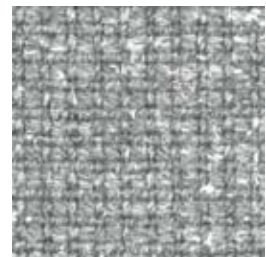
Bilberry C 767



Conker C 766



Granite C 765



Slate C 763

Material: 75 % wool
25 % nettle fibre

Weight: 525 g/m²

Abrasion resistance: 50.000 abrasion cycles acc. Martindale

Flame resistance: EN 1021 - 1:2006 (cigarette test)
EN 1021 - 2:2006 (match test)

Light fastness: 5

Rub fastness: wet 4
Dry 4

Cleaning: vacuum clean regularly, have dry-cleaned professionally, alternatively wipe with a damp cloth

Please note that the printed colours may vary from the original.



HZ 1000 holzer not upholstered
Width: 565 mm
Height: 830 mm
Depth: 560 mm
Seating height: 450 mm



HZ 1001 holzer 5 mm upholstered
Width: 565 mm
Height: 840 mm
Depth: 570 mm
Seating height: 455 mm



HZ 1002 holzer 30 mm upholstered
Width: 565 mm
Height: 850 mm
Depth: 580 mm
Seating height: 465 mm



HZ 1006 Nest of Tables I
Diameter: 400 mm
Height: 510 mm



HZ 1007 Nest of Tables II
Diameter: 450 mm
Height: 580 mm



HZ 1008 Nest of Tables III
Diameter: 450 mm
Height: 650 mm



HZ 1004 Table, folding
Width: 800 mm
Length: 1800 mm
Height: 720 mm



HZ 1005 Table, folding
Width: 900 mm
Length: 2000 mm
Height: 720 mm



HZ 1010 Coat Stand
Diameter: 400 mm
Height: 1600 mm
Circular base 6 mm solid stainless steel
Polished surface



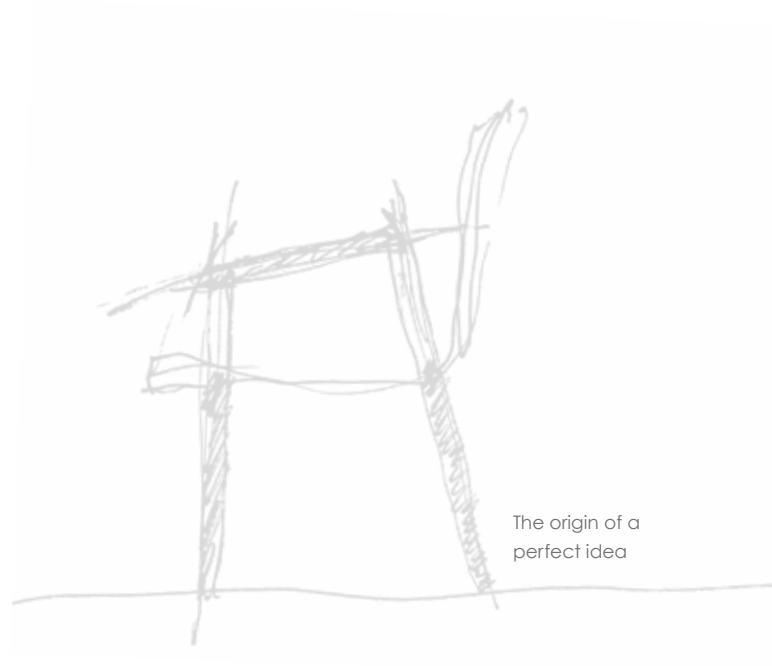
LÖFFLER

die bewegen

LÖFFLER Bürositzmöbel GmbH
Rosenstr. 8, D-91244 Reichenschwand

info@loeffler-sitzmoebel.de
www.loeffler-die-bewegen.de
www.tangosedo.de

Telephone: +49 (0)9151/83008-0
Fax: +49 (0)9151/83008-88



The origin of a
perfect idea